



MAKE A DIFFERENCE



COMPRO ELECTRONICS

Shenzhen Factory Add
2nd Floor, Building No.5, Jinmeiwei Industrial Park, No.12 Xingye West Road,
Heyi Community, Shajing Street, Baoan District, Shenzhen

Changzhou Factory Add
Liban Road, Lijia Town, Wujin, Changzhou, Jiangsu

Tel: +86 519 88315733
Email: comp188@188.com

Fax: +86 519 88315722
www.compele.com

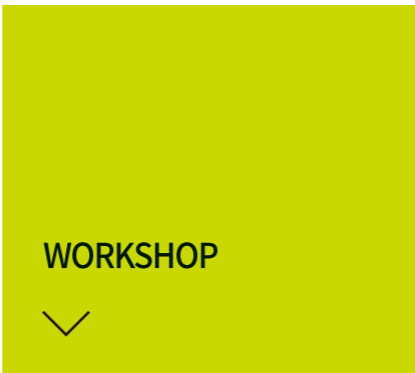


www.compele.com



SHENZHEN FACTORY

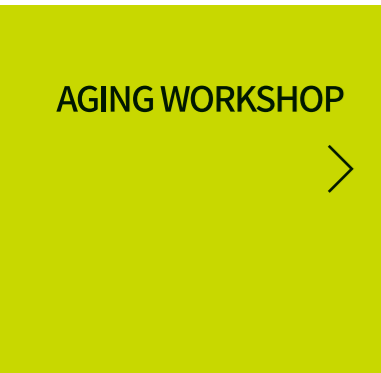
CHANGZHOU FACTORY



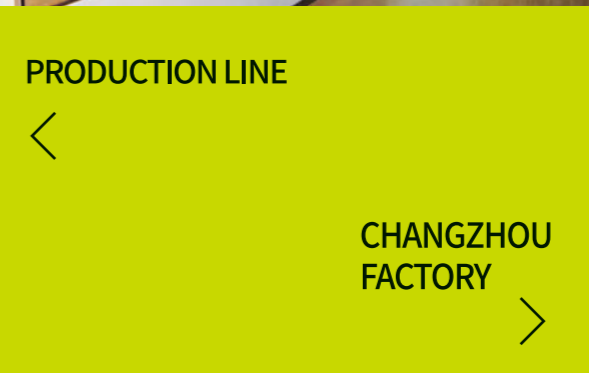
WORKSHOP



CERTIFICATE WALL



AGING WORKSHOP



PRODUCTION LINE



CHANGZHOU
FACTORY



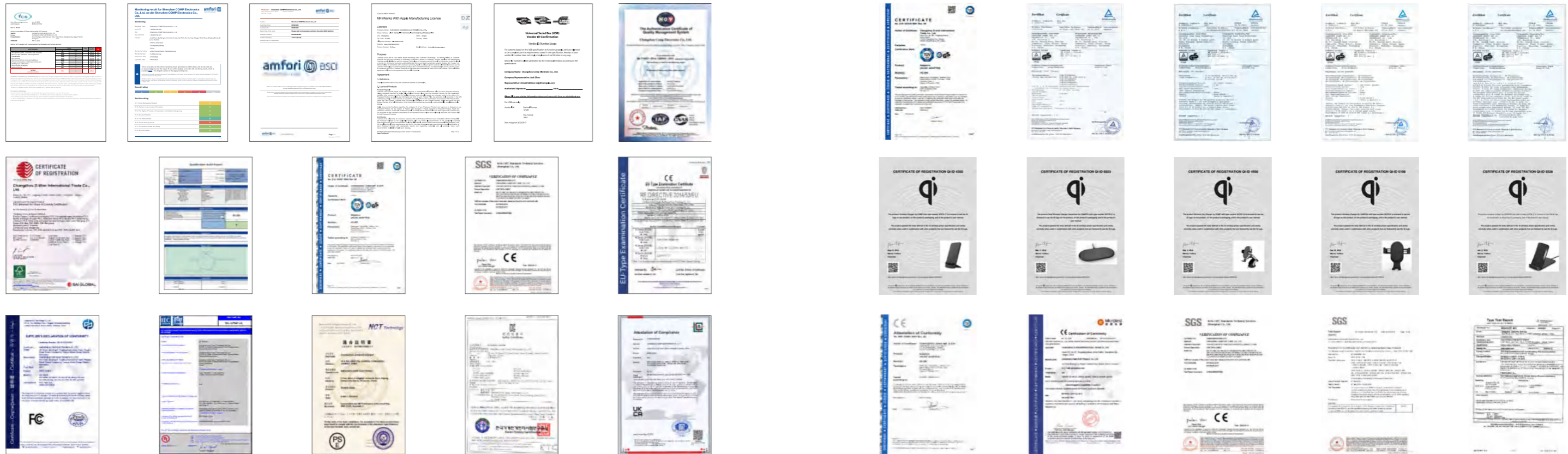
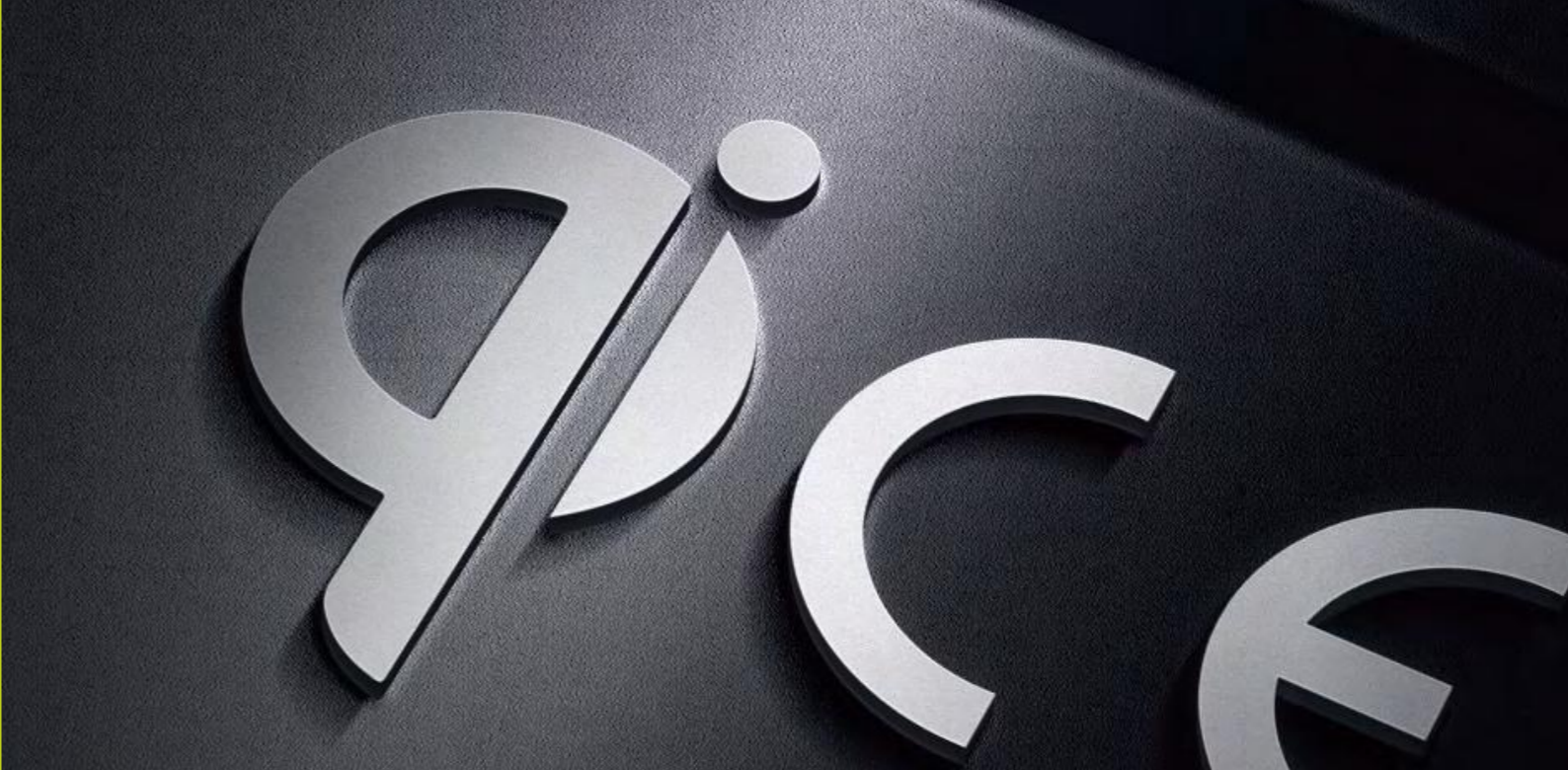
PRODUCTION LINE



CABLE DRAWING
WORKSHOP



CERTIFICATE





Home Charger



HC-167

100W GAN PD+QC 4 PORTS WIRED DESKTOP CHARGER

INPUT:	110-240V
OUTPUT A(A1=A2) SCP:	4.5V/5A, 5V/4.5A, 9V/3A, 12V/3A, 20V/3A(60W MAX)
OUTPUT C(C1=C2):	5V/3A, 9V/3A, 12V/3A, 15V/3A, 20V/5A MAX(PPS: 3.3-20V/5A)(100W MAX)
OUTPUT A1+A2:	5V/4.8A=24W
OUTPUT C1+C2:	65W+30W=95W
OUTPUT C1/C2+A1/A2:	65W+30W=95W
OUTPUT C1/C2+A1+A2:	80W+10W+10W=100W
OUTPUT C1+C2+A1/A2:	60W+20W+20W=100W
OUTPUT C1+C2+A1+A2:	60W+20W+10W+10W=100W



HC-195

100W GAN PD+QC 4 PORTS WIRED DESKTOP CHARGER

INPUT:	110-240V
OUTPUT A SCP:	4.5V/5A, 5V/4.5A, 9V/3A, 12V/3A, 20V/3A(60W MAX)
OUTPUT C(C1=C2=C3):	5V/3A, 9V/3A, 12V/3A, 15V/3A, 20V/5A MAX(PPS: 3.3-20V/5A)(100W MAX)
OUTPUT C1+C2:	65W+30W=95W
OUTPUT C3+A:	5V/4.8A(24W)
OUTPUT C1/C2+C3/A:	65W+30W=95W
OUTPUT C1/C2+C3+A:	80W+10W+10W=100W
OUTPUT C1+C2+C3/A:	60W+20W+20W=100W
OUTPUT C1+C2+C3+A:	60W+20W+10W+10W=100W



HC-202

65W GAN PD+QC3.0 3 PORTS WALL CHARGER

INPUT: 110-240V
 OUTPUT-C1: 5V/3A, 9V/3A, 12V/3A, 15V/3A, 20V/3.25A
 OUTPUT-C2: 5V/3A, 9V/2.22A, 12V/1.67A
 OUTPUT-A: 5V/3A, 9V/2A, 12V/1.5A
 OUTPUT-C1+C2: 45W(C1)+20W(C2)
 OUTPUT-C1+A: 45W+18W
 OUTPUT-C2+A: 20W+18W
 OUTPUT-C1+C2+A: 45W(C1)+10W(C2)+10W(A)
 TOTAL OUTPUT: 65W



HC-203

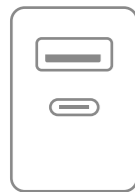
65W GAN PD 2 PORTS WALL CHARGER

INPUT: 110-240V
 OUTPUT-C1/C2: 5V/3A, 9V/3A, 12V/3A, 15V/3A, 20V/3.25A
 OUTPUT-C1+C2: 45W(C1)+20W(C2)
 TOTAL OUTPUT: 65W

HC-206

45W GAN PD 2 PORTS WALL CHARGER

INPUT: 110-240V
 OUTPUT-C1/C2: 5V/3A, 9V/3A, 12V/3A, 15V/3A, 20V/2.25A
 OUTPUT-C1+C2: 25W(C1)+20W(C2)
 TOTAL OUTPUT: 45W



HC-204

65W GAN PD+QC3.0 2 PORTS WALL CHARGER

INPUT: 110-240V
 OUTPUT-A: 5V/3A, 9V/2A, 12V/1.5A
 OUTPUT-C: 5V/3A, 9V/3A, 12V/3A, 15V/3A, 20V/3.25A
 OUTPUT A+C: 18W+45W
 TOTAL OUTPUT: 65W



HC-205

65W GAN PD 1 PORT WALL CHARGER

INPUT: 110-240V
 OUTPUT-C: 5V/3A, 9V/3A, 12V/3A, 15V/3A, 20V/3.25A
 TOTAL OUTPUT: 65W

HC-207

45W GAN PD+QC3.0 2 PORTS WALL CHARGER

INPUT: 110-240V
 OUTPUT-A: 5V/3A, 9V/2A, 12V/1.5A
 OUTPUT-C: 5V/3A, 9V/3A, 12V/3A, 15V/3A, 20V/2.25A
 OUTPUT A+C: 12W+30W
 TOTAL OUTPUT: 45W

HC-208

45W GAN PD 1 PORT WALL CHARGER

INPUT: 110-240V
 OUTPUT-C: 5V/3A, 9V/3A, 12V/3A, 15V/3A, 20V/2.25A
 TOTAL OUTPUT: 45W



HC-139

30W PD+QC3.0 2 PORTS WALL CHARGER

INPUT: 110-240V
 OUTPUT-A: 5V/3A, 9V/2A, 12V/1.5A
 OUTPUT-C: 5V/3A, 9V/3A, 12V/2.5A, 15V/2A, 20V/1.5A
 OUTPUT A+C: 5V/3.1A
 TOTAL OUTPUT: 30W

HC-168

25W PD+QC3.0 2 PORTS WALL CHARGER

INPUT: 110-240V
 OUTPUT-A: 5V/3A, 9V/2A, 12V/1.5A
 OUTPUT-C: 5V/3A, 9V/2.67A
 OUTPUT A+C: 5V/3.1A
 TOTAL OUTPUT: 25W

HC-103

20W PD+QC3.0 2 PORTS WALL CHARGER

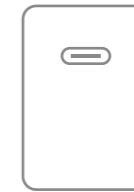
INPUT: 110-240V
 OUTPUT-A: 5V/3A, 9V/2A, 12V/1.5A
 OUTPUT-C: 5V/3A, 9V/2.22A, 12V/1.67A
 OUTPUT A+C: 5V/3.1A
 TOTAL OUTPUT: 20W



HC-135

USB 2 PORTS WALL CHARGER

INPUT: 110-240V
 OUTPUT-A1+A2: 5V/3.4A
 TOTAL OUTPUT: 17W



HC-140

30W PD 1 PORT WALL CHARGER

INPUT: 110-240V
 OUTPUT-C: 5V/3A, 9V/3A, 12V/2.5A, 15V/2A, 20V/1.5A
 TOTAL OUTPUT: 30W

HC-141

25W PD 1 PORT WALL CHARGER

INPUT: 110-240V
 OUTPUT-C: 5V/3A, 9V/2.67A
 TOTAL OUTPUT: 25W

HC-105

20W PD 1 PORT WALL CHARGER

INPUT: 110-240V
 OUTPUT-C: 5V/3A, 9V/2.22A, 12V/1.67A
 TOTAL OUTPUT: 20W



HC-134

USB 1 PORT WALL CHARGER

INPUT: 110-240V
 OUTPUT-A: 5V/2.4A
 TOTAL OUTPUT: 12W



HC-173

65W GAN PD+QC3.0 3 PORTS WALL CHARGER

INPUT: 110-240V
 OUTPUT-C1: 5V/3A, 9V/3A, 12V/3A, 15V/3A, 20V/3.25A
 OUTPUT-C2: 5V/3A, 9V/2.22A, 12V/1.67A
 OUTPUT-A: 5V/3A, 9V/2A, 12V/1.5A
 OUTPUT-C1+C2: 45W(C1)+20W(C2)
 OUTPUT-C1+A: 45W+18W
 OUTPUT-C2+A: 20W+18W
 OUTPUT-C1+C2+A: 45W(C1)+10W(C2)+10W(A)
 TOTAL OUTPUT: 65W



HC-209

65W GAN PD+QC3.0 2 PORTS WALL CHARGER

INPUT: 110-240V
 OUTPUT-A: 5V/3A, 9V/2A, 12V/1.5A
 OUTPUT-C: 5V/3A, 9V/3A, 12V/3A, 15V/3A, 20V/3.25A
 OUTPUT A+C: 18W+45W
 TOTAL OUTPUT: 65W

HC-211

45W GAN PD+QC3.0 2 PORTS WALL CHARGER

INPUT: 110-240V
 OUTPUT-A: 5V/3A, 9V/2A, 12V/1.5A
 OUTPUT-C: 5V/3A, 9V/3A, 12V/3A, 15V/3A, 20V/2.25A
 OUTPUT A+C: 12W+30W
 TOTAL OUTPUT: 45W



HC-174

65W GAN PD 2 PORTS WALL CHARGER

INPUT: 110-240V
 OUTPUT-C1/C2: 5V/3A, 9V/3A, 12V/3A, 15V/3A, 20V/3.25A
 OUTPUT-C1+C2: 45W(C1)+20W(C2)
 TOTAL OUTPUT: 65W



HC-210

65W GAN PD 1 PORT WALL CHARGER

INPUT: 110-240V
 OUTPUT-C: 5V/3A, 9V/3A, 12V/3A, 15V/3A, 20V/3.25A
 TOTAL OUTPUT: 65W

HC-175

45W GAN PD 2 PORTS WALL CHARGER

INPUT: 110-240V
 OUTPUT-C1/C2: 5V/3A, 9V/3A, 12V/3A, 15V/3A, 20V/2.25A
 OUTPUT-C1+C2: 25W(C1)+20W(C2)
 TOTAL OUTPUT: 45W

HC-212

45W GAN PD 1 PORT WALL CHARGER

INPUT: 110-240V
 OUTPUT-C: 5V/3A, 9V/3A, 12V/3A, 15V/3A, 20V/2.25A
 TOTAL OUTPUT: 45W



HC-214

30W PD 1 PORT WALL CHARGER

INPUT: 110-240V
 OUTPUT-C: 5V/3A, 9V/3A, 12V/2.5A, 15V/2A, 20V/1.5A
 TOTAL OUTPUT: 30W

HC-216

25W PD 1 PORT WALL CHARGER

INPUT: 110-240V
 OUTPUT-C: 5V/3A, 9V/2.67A
 TOTAL OUTPUT: 25W

HC-218

20W PD 1 PORT WALL CHARGER

INPUT: 110-240V
 OUTPUT-C: 5V/3A, 9V/2.22A, 12V/1.67A
 TOTAL OUTPUT: 20W



HC-219

USB 1 PORT WALL CHARGER

INPUT: 110-240V
 OUTPUT-A: 5V/3A
 TOTAL OUTPUT: 15W

HC-220

USB 1 PORT WALL CHARGER

INPUT: 110-240V
 OUTPUT-A: 5V/2.4A
 TOTAL OUTPUT: 12W



HC-213

30W PD+QC3.0 2 PORTS WALL CHARGER

INPUT: 110-240V
 OUTPUT-A: 5V/3A, 9V/2A, 12V/1.5A
 OUTPUT-C: 5V/3A, 9V/3A, 12V/2.5A, 15V/2A, 20V/1.5A
 OUTPUT A+C: 5V/3.1A
 TOTAL OUTPUT: 30W

HC-215

25W PD+QC3.0 2 PORTS WALL CHARGER

INPUT: 110-240V
 OUTPUT-A: 5V/3A, 9V/2A, 12V/1.5A
 OUTPUT-C: 5V/3A, 9V/2.67A
 OUTPUT A+C: 5V/3.1A
 TOTAL OUTPUT: 25W

HC-217

20W PD+QC3.0 2 PORTS WALL CHARGER

INPUT: 110-240V
 OUTPUT-A: 5V/3A, 9V/2A, 12V/1.5A
 OUTPUT-C: 5V/3A, 9V/2.22A, 12V/1.67A
 OUTPUT A+C: 5V/3.1A
 TOTAL OUTPUT: 20W



HC-181

65W GAN PD+QC3.0 3 PORTS WALL CHARGER

INPUT: 110-240V
 OUTPUT-C1: 5V/3A, 9V/3A, 12V/3A, 15V/3A, 20V/3.25A
 OUTPUT-C2: 5V/3A, 9V/2.22A, 12V/1.67A
 OUTPUT-A: 5V/3A, 9V/2A, 12V/1.5A
 OUTPUT-C1+C2: 45W(C1)+20W(C2)
 OUTPUT-C1+A: 45W+18W
 OUTPUT-C2+A: 20W+18W
 OUTPUT-C1+C2+A: 45W(C1)+10W(C2)+10W(A)
 TOTAL OUTPUT: 65W

HC-180

65W GAN PD 2 PORTS WALL CHARGER

INPUT: 110-240V
 OUTPUT-C1/C2: 5V/3A, 9V/3A, 12V/3A, 15V/3A, 20V/3.25A
 OUTPUT-C1+C2: 45W(C1)+20W(C2)
 TOTAL OUTPUT: 65W

HC-184

45W GAN PD 2 PORTS WALL CHARGER

INPUT: 110-240V
 OUTPUT-C1/C2: 5V/3A, 9V/3A, 12V/3A, 15V/3A, 20V/2.25A
 OUTPUT-C1+C2: 25W(C1)+20W(C2)
 TOTAL OUTPUT: 45W

HC-178

65W GAN PD+QC3.0 2 PORTS WALL CHARGER

INPUT: 110-240V
 OUTPUT-A: 5V/3A, 9V/2A, 12V/1.5A
 OUTPUT-C: 5V/3A, 9V/3A, 12V/3A, 15V/3A, 20V/3.25A
 OUTPUT A+C: 18W+45W
 TOTAL OUTPUT: 65W

HC-182

45W GAN PD+QC3.0 2 PORTS WALL CHARGER

INPUT: 110-240V
 OUTPUT-A: 5V/3A, 9V/2A, 12V/1.5A
 OUTPUT-C: 5V/3A, 9V/3A, 12V/3A, 15V/3A, 20V/2.25A
 OUTPUT A+C: 12W+30W
 TOTAL OUTPUT: 45W

HC-179

65W GAN PD 1 PORT WALL CHARGER

INPUT: 110-240V
 OUTPUT-C: 5V/3A, 9V/3A, 12V/3A, 15V/3A, 20V/3.25A
 TOTAL OUTPUT: 65W

HC-183

45W GAN PD 1 PORT WALL CHARGER

INPUT: 110-240V
 OUTPUT-C: 5V/3A, 9V/3A, 12V/3A, 15V/3A, 20V/2.25A
 TOTAL OUTPUT: 45W



HC-186

20W PD+QC3.0 2 PORTS WALL CHARGER

INPUT: 110-240V
 OUTPUT-A: 5V/3A, 9V/2.22A, 12V/1.67A
 OUTPUT-C: 5V/3A, 9V/2.22A, 12V/1.67A
 OUTPUT A+C: 5V/3.4A
 TOTAL OUTPUT: 20W

HC-188

20W PD 1 PORT WALL CHARGER

INPUT: 110-240V
 OUTPUT-C: 5V/3A, 9V/2.22A, 12V/1.67A
 TOTAL OUTPUT: 20W

HC-190

18W QC3.0 1 PORT WALL CHARGER

INPUT: AC110-240V 50/60Hz
 OUTPUT-A: 5V/3A, 9V/2A, 12V/1.5A
 TOTAL OUTPUT: 18W

HC-192

USB 1 PORT WALL CHARGER

INPUT: 110-240V
 OUTPUT-A: 5V/3A
 TOTAL OUTPUT: 15W

HC-194

20W PD 2 PORTS WALL CHARGER

INPUT: 110-240V
 OUTPUT-C1: 5V/3A, 9V/2.22A, 12V/1.67A
 OUTPUT-C2: 5V/3A, 9V/2.22A, 12V/1.67A
 OUTPUT C1+C2: 5V/3.4A
 TOTAL OUTPUT: 20W





HC-196

140W GAN PD+QC 3 PORTS WALL CHARGER

INPUT: 110-240V
 OUTPUT A SCP: 5V/4.5A, 9V/2A, 12V/1.5A(22.5W MAX)
 OUTPUT C1: 5V/3A, 9V/3A, 12V/3A, 15V/3A, 20V/5A, 28V/5A(140W MAX)
 OUTPUT C2: 5V/3A, 9V/3A, 12V/3A, 15V/3A, 20V/5A(100W MAX)
 OUTPUT C1+C2: 65W+65W=130W
 OUTPUT C1/C2+A: 100W+22.5W=122.5W
 OUTPUT C1+C2+A: 65W+45W+22.5W=132.5W

HC-197

120W GAN PD+QC 3 PORTS WALL CHARGER

INPUT: 110-240V
 OUTPUT A SCP: 5V/4.5A, 9V/2A, 12V/1.5A(22.5W MAX)
 OUTPUT C1: 5V/3A, 9V/3A, 12V/3A, 15V/3A, 20V/5A, 24V/5A(120W MAX)
 OUTPUT C2: 5V/3A, 9V/3A, 12V/3A, 15V/3A, 20V/5A(100W MAX)
 OUTPUT C1+C2: 65W+30W=95W
 OUTPUT C1/C2+A: 65W+22.5W=87.5W
 OUTPUT C1+C2+A: 65W+30W+22.5W=117.5W

HC-198

100W GAN PD+QC 3 PORTS WALL CHARGER

INPUT: 110-240V
 OUTPUT A SCP: 5V/4.5A, 9V/2A, 12V/1.5A(22.5W MAX)
 OUTPUT C1: 5V/3A, 9V/3A, 12V/3A, 15V/3A, 20V/5A(100W MAX)
 OUTPUT C2: 5V/3A, 9V/3A, 12V/3A, 15V/3A, 20V/5A(100W MAX)
 OUTPUT C1+C2: 65W+30W=95W
 OUTPUT C1/C2+A: 65W+22.5W=87.5W
 OUTPUT C1+C2+A: 45W+30W+22.5W=97.5W

HC-199

65W GAN PD+QC 3 PORTS WALL CHARGER

INPUT: AC 110-240V
 OUTPUT-C1: 5V/3A, 9V/3A, 12V/3A, 15V/3A, 20V/3.25A
 OUTPUT-C2: 5V/3A, 9V/2.22A, 12V/1.67A
 OUTPUT-A: 5V/3A, 9V/2A, 12V/1.5A
 OUTPUT-C1+C2: 45W(C1)+20W(C2)
 OUTPUT-C1+A: 45W+18W
 OUTPUT-C2+A: 5V/3A
 OUTPUT-C1+C2+A: 45W(C1)+15W(C2+A)
 TOTAL OUTPUT: 65W



HC-149

25W PD 1 PORT WALL CHARGER

INPUT: 110-240V
 OUTPUT: 5V/3A, 9V/2.67A, 12V/2.08A
 TOTAL OUTPUT: 25W



RoHS



HC-150

25W PD+QC3.0 2 PORTS WALL CHARGER

INPUT: 110-240V
 PD OUTPUT: 5V/3A, 9V/2.67A, 12V/2.08A
 QC3.0 OUTPUT: 5V/3A, 9V/2A, 12V/1.5A
 OUTPUT A+C: 5V3.1A
 TOTAL OUTPUT: 25W



RoHS



HC-120

20W PD 1 PORT WALL CHARGER

INPUT: 110-240V
 OUTPUT: 5V/3A, 9V/2.22A, 12V/1.67A
 TOTAL OUTPUT: 20W



RoHS



HC-126

20W PD+QC3.0 2 PORTS WALL CHARGER

INPUT: 110-240V
 PD OUTPUT: 5V/3A, 9V/2.22A, 12V/1.67A
 QC3.0 OUTPUT: 5V/3A, 9V/2A, 12V/1.5A
 OUTPUT A+C: 5V/3.1A
 TOTAL OUTPUT: 20W



RoHS



HC-146

20W MINI PD 1 PORT WALL CHARGER

INPUT: 110-240V
 OUTPUT: 5V/3A, 9V/2.22A, 12V/1.67A
 TOTAL OUTPUT: 20W



RoHS



HC-147

30W MINI PD 1 PORT WALL CHARGER

INPUT: 110-240V 50/60Hz
 OUTPUT: 5V/3A, 9V/3A, 12V/2.5A, 15V/2A, 20V/1.5A
 TOTAL OUTPUT: 30W



RoHS



HC-088

QC2.0 1 PORT WALL CHARGER

INPUT: 110-240V
OUTPUT: 5V/2A, 9V/1.67A
TOTAL OUTPUT: 15W

CE

RoHS



HC-164

USB 1 PORT WALL CHARGER

INPUT: 110-240V
OUTPUT: 5V/2A
TOTAL OUTPUT: 10W

CE

RoHS



HC-121

USB 2 PORTS WALL CHARGER

INPUT: 110-240V
OUTPUT: 5V/2.4A
TOTAL OUTPUT: 12W

CE

RoHS



HC-056

USB 1 PORT WALL CHARGER

INPUT: 110-240V
OUTPUT: 5V/1A
TOTAL OUTPUT: 5W

RoHS



HC-057

USB 2 PORTS WALL CHARGER

INPUT: 110-240V
OUTPUT: 5V/2A
TOTAL OUTPUT: 10W

RoHS



HC-054

20W PD 1 PORT WALL CHARGER

INPUT: 110-240V
OUTPUT: PD3.0 5V/3A 9V/2.22A 12V/1.67A
TOTAL OUTPUT: 20W

RoHS



Car Charger





CC-118

40W PD 2 PORTS CAR CHARGER

INPUT: 12-24V
 PD OUTPUT 1: 5V/3A, 9V/2.22A, 12V/1.67A
 PD OUTPUT 2: 5V/3A, 9V/2.22A, 12V/1.67A
 TOTAL OUTPUT: 40W(20W+20W)

CE RoHS



CC-155

83W PD+QC3.0 2 PORTS CAR CHARGER

INPUT: 12-24V
 OUTPUT-C: 5V/3A, 9V/3A, 12V/3A, 15V/3A, 20V/3.25A
 OUTPUT-A: 5V/3A, 9V/2A, 12V/1.5A
 OUTPUT A+C: 65W+18W
 TOTAL OUTPUT: 83W

CE RoHS



CC-156

85W PD 2 PORTS CAR CHARGER

INPUT: 12-24V
 OUTPUT-C1: 5V/3A, 9V/3A, 12V/3A, 15V/3A, 20V/3.25A
 OUTPUT-C2: 5V/3A, 9V/2.22A, 12V/1.67A
 OUTPUT A+C: 65W+20W
 TOTAL OUTPUT: 85W

CE RoHS



CC-163

38W PD+QC3.0 2 PORTS CAR CHARGER

INPUT: 12-24V
 OUTPUT-C: 5V/3A, 9V/2.22A, 12V/1.67A
 OUTPUT-A: 5V/3A, 9V/2A, 12V/1.5A
 OUTPUT A+C: 18W+20W
 TOTAL OUTPUT: 38W

CE RoHS



CC-164

40W PD 2 PORTS CAR CHARGER

INPUT: 12-24V
 OUTPUT-C1: 5V/3A, 9V/2.22A, 12V/1.67A
 OUTPUT-C2: 5V/3A, 9V/2.22A, 12V/1.67A
 OUTPUT C1+C2: 20W+20W
 TOTAL OUTPUT: 40W

CE RoHS



CC-165

20W PD+QC3.0 2 PORTS CAR CHARGER

INPUT: 12-24V
 OUTPUT-C: 5V/3A, 9V/2.22A, 12V/1.67A
 OUTPUT-A: 5V/3A, 9V/2A, 12V/1.5A
 OUTPUT A+C: 5V/3.1A
 TOTAL OUTPUT: 20W

CE RoHS



CC-166

USB 2 PORTS CAR CHARGER

INPUT: 12-24V
 OUTPUT-A1+A2: 5V/3.4A
 TOTAL OUTPUT: 17W

CE RoHS



CC-167

40W PD 2 PORTS CAR CHARGER

INPUT: 12-24V
OUTPUT-C1: 5V/3A, 9V/2.22A, 12V/1.67A
OUTPUT-C2: 5V/3A, 9V/2.22A, 12V/1.67A
OUTPUT C1+C2: 20W+20W
TOTAL OUTPUT: 40W

CE

RoHS



CC-168

30W PD 1 PORT CAR CHARGER

INPUT: 12-24V
OUTPUT-C: 5V/3A, 9V/3A, 12V/2.5A
TOTAL OUTPUT: 30W

CE

RoHS



CC-169

20W PD 1 PORT CAR CHARGER

INPUT: 12-24V
OUTPUT-C: 5V/3A, 9V/2.22A, 12V/1.67A
TOTAL OUTPUT: 20W

CE

RoHS



CC-121

20W PD+QC3.0 2 PORTS CAR CHARGER

INPUT: 12-24V
PD OUTPUT: 5V/3A, 9V/2.22A, 12V/1.67A
QC3.0 OUTPUT: 5V/3A, 9V/2A, 12V/1.5A
OUTPUT A+C: 5V/3.1A
TOTAL OUTPUT: 20W

CE

RoHS



CC-122

QC3.0 1 PORT CAR CHARGER

INPUT: 12-24V
OUTPUT: 5V/3A, 9V/2A, 12V/1.5A
TOTAL OUTPUT: 18W

CE

RoHS



CC-124

USB 2 PORTS CAR CHARGER

INPUT: 12-24V
OUTPUT: 5V/2.4A
TOTAL OUTPUT: 12W

CE

RoHS



CC-170

38W PD+QC3.0 2 PORTS CAR CHARGER

INPUT: 12-24V
OUTPUT-C: 5V/3A, 9V/2.22A, 12V/1.67A
OUTPUT-A: 5V/3A, 9V/2A, 12V/1.5A
OUTPUT A+C: 18W+20W
TOTAL OUTPUT: 38W

CE

RoHS



CC-171

QC3.0 1 PORT CAR CHARGER

INPUT: 12-24V
OUTPUT-A: 5V/3A, 9V/2A, 12V/1.5A
TOTAL OUTPUT: 18W

CE

RoHS



CC-172

USB 2 PORTS CAR CHARGER

INPUT: 12-24V
OUTPUT A1+A2: 5V/2.4A
TOTAL OUTPUT: 12W

CE

RoHS



CC-097

20W PD 1 PORT CAR CHARGER

INPUT: 12-24V
OUTPUT: 5V/3A, 9V/2.22A, 12V/1.67A
TOTAL OUTPUT: 20W

CE

RoHS



CC-095

20W PD+QC3.0 2 PORTS CAR CHARGER

INPUT: 12-24V
PD OUTPUT: 5V/3A, 9V/2.22A, 12V/1.67A
QC3.0 OUTPUT: 5V/3A, 9V/2A, 12V/1.5A
OUTPUT A+C: 5V/3.1A
TOTAL OUTPUT: 20W

CE

RoHS



CC-096

38W PD+QC3.0 2 PORTS CAR CHARGER

INPUT: 12-24V
PD OUTPUT: 5V/3A, 9V/2.22A, 12V/1.67A
QC3.0 OUTPUT: 5V/3A, 9V/2A, 12V/1.5A
OUTPUT A+C: 18W+20W
TOTAL OUTPUT: 38W

CE

RoHS



Wireless Charger



WC-137

3 IN 1 WITH NIGHT LAMP FUNCTION MAGNETIC WIRELESS CHARGING STATION

INPUT: 5V/2A, 9V/2A, 12V/2.5A
OUTPUT: 15W/10W/7.5W/5W
MATERIAL: TEMPERED GLASS+PC

CE

RoHS

WC-138

3 IN 1 MAGNETIC WIRELESS CHARGING STATION WITH NIGHT LAMP AND CLOCK FUNCTION

INPUT: 5V/2A, 9V/2A, 12V/2.5A
OUTPUT: 15W/10W/7.5W/5W
MATERIAL: TEMPERED GLASS+PC

CE

RoHS





WC-136

MAGNETIC WIRELESS CHARGING PAD

INPUT: ABOVE 20W (PD3.0)
 OUTPUT: 15W/10W/7.5W/5W
 MATERIAL: ALUMINUM ALLOY+ABS

CE RoHS



WC-106

MAGNETIC WIRELESS CHARGING PAD

INPUT: 5V/3A, 9V/2A, 12V/2.5A
 OUTPUT: 15W/10W/7.5W/5W
 MATERIAL: ALUMINUM ALLOY+ ABS

CE RoHS



WC-107

MAGNETIC WIRELESS CHARGING PAD

INPUT: 5V/3A, 9V/2A, 12V/2.5A
 OUTPUT: 15W/10W/7.5W/5W
 MATERIAL: ALUMINUM ALLOY+ ABS

CE RoHS



WC-104

MAGNETIC WIRELESS CHARGING PAD

INPUT: 5V/3A, 9V/2A, 12V/2.5A
 OUTPUT: 15W/10W/7.5W/5W
 MATERIAL: WC-104/ABS,WC-105/ALUMINUM ALLOY+ABS

CE RoHS

Built-in Fan Semiconductor Chilling Plate which can cool the phone surface to improve charging efficiency.



WC-151

MAGNETIC WIRELESS CHARGING CAR HOLDER WITH COLORFUL ATMOSPHERE LIGHTS

INPUT: 5V/2A, 9V/2A, 12V/2.5A
 OUTPUT: 15W/10W/7.5W/5W
 MATERIAL: GLASS FIBER + ABS

CE RoHS



WC-108

MAGNETIC WIRELESS CHARGING CAR HOLDER

INPUT: 5V/2A, 9V/2A, 12V/2.5A
 OUTPUT: 15W/10W/7.5W/5W
 MATERIAL: ABS

CE RoHS





WC-125

WIRELESS CHARGING CAR HOLDER

INPUT: 5V/2A, 9V/1.67A, 12V/2.5A
OUTPUT: 15W/10W/7.5W/5W
MATERIAL: ABS

CE Qi RoHS



WC-109

WIRELESS CHARGING CAR HOLDER

INPUT: 5V/2A, 9V/1.67A, 12V/1.5A-3A
OUTPUT: 15W/10W/7.5W/5W
MATERIAL: TEMPERED GLASS+ABS

CE Qi RoHS



WC-139 WITH 7 DIFFERENT COLORS

WIRELESS CHARGING CAR HOLDER

INPUT: 5V/2A, 9V/1.67A, 12V/2.5A
OUTPUT: 15W/10W/7.5W/5W
MATERIAL: ABS

CE RoHS



WC-121 AUTOMATIC COIL ALIGNMENT, IMPROVE CHARGING EFFICIENCY.

WIRELESS CHARGING CAR HOLDER

INPUT: 5V/2A, 9V/2A, 12V/2.5A
OUTPUT: 15W/10W/7.5W/5W
MATERIAL: TEMPERED GLASS+ABS

CE Qi RoHS



WC-111

WIRELESS CHARGING CAR HOLDER

INPUT: 5V/2A, 9V/1.67A, 12V/1.5A-3A
OUTPUT: 15W/10W/7.5W/5W
MATERIAL: ABS+PU LEATHER

CE Qi RoHS



WC-098

WIRELESS CHARGING CAR HOLDER

INPUT: 5V/2A, 9V/1.67A, 12V/1.5A-3A
OUTPUT: 15W/10W/7.5W/5W
MATERIAL: ABS

CE Qi RoHS



WC-110 WITH BUILT-IN FAN, LOWER CHARGING TEMPERATURE

WIRELESS CHARGING CAR HOLDER

INPUT: 5V/2A, 9V/1.67A, 12V/1.5A-3A
OUTPUT: 15W/10W/7.5W/5W
MATERIAL: ABS

CE Qi RoHS



WCPS-6

WIRELESS CHARGING CAR HOLDER

INPUT: 5V/2A, 9V/1.67A
OUTPUT: 10W/7.5W/5W
MATERIAL: ABS

CE Qi RoHS



WC-142

MAGNETIC 2 IN 1 WIRELESS CHARGING PAD

INPUT: 5V/2A, 9V/1.67A, 12V/2.5A; ABOVE 20W (PD3.0)
OUTPUT: DOUBLE 15W/10W/7.5W/5W
MATERIAL: ANTI-SKID SILICONE + CNC ALUMINUM ALLOY BOTTOM SHELL

CE

RoHS



WC-079

3 IN 1 WIRELESS CHARGING PAD

INPUT: 5V/2A, 9V/2A, 12V/2.5A
OUTPUT: DOUBLE 15W/10W/7.5W/5W/2W
MATERIAL: ABS

CE

RoHS



WC-152

3 IN 1 WIRELESS CHARGING PAD

INPUT: 5V/2A, 9V/2A, 12V/2.5A
OUTPUT: 15W/10W/7.5W/5W/2W
MATERIAL: ABS

CE

RoHS



WC-153

3 IN 1 WIRELESS CHARGING PAD

INPUT: 5V/2A, 9V/1.67A, 12V/1.5A-3A
OUTPUT: 15W/10W/7.5W/5W/2W
MATERIAL: ABS

CE

RoHS



WC-150

3 IN 1 WIRELESS CHARGING STAND

INPUT: 5V/2A, 9V/1.67A, 12V/2.5A
OUTPUT: 15W/10W/7.5W/5W
MATERIAL: ABS

CE

RoHS



WCPS-5

WIRELESS CHARGING STAND

INPUT: 5V/2A, 9V/1.67A, 12V/2.5A-3A
OUTPUT: 15W/10W/7.5W/5W
MATERIAL: ABS

CE

Qi

RoHS



WC-154

3 IN 1 WIRELESS CHARGING STAND

INPUT: 5V/2A, 9V/2A, 12V/2.5A
OUTPUT: 15W/10W/7.5W/5W/2W
MATERIAL: ABS

CE

RoHS



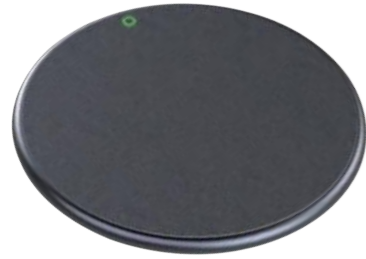
WC-155

3 IN 1 WIRELESS CHARGING STAND

INPUT: 5V/2A, 9V/2A, 12V/2.5A
OUTPUT: 15W/10W/7.5W/5W/2W
MATERIAL: ABS

CE

RoHS



WCPS-19

WIRELESS CHARGING PAD

INPUT: 5V/3A, 9V/2A, 12V/2.5A
OUTPUT: 15W/10W/7.5W/5W
MATERIAL: ALUMINUMALLOY+ABS

CE Qi RoHS



WCPS-3

WIRELESS CHARGING PAD

INPUT: 5V/2A, 9V/1.67A
OUTPUT: 10W/7.5W/5W
MATERIAL: ABS

CE RoHS



WCPS-15 □ WCPS-16 □

WIRELESS CHARGING PAD

INPUT: 5V/2A, 9V/1.67A
OUTPUT: 10W/7.5W/5W
MATERIAL: ALUMINUMALLOY+FABRIC

CE Qi RoHS



WCPS-23 □ WCPS-24 □

WIRELESS CHARGING PAD

INPUT: 5V/2A, 9V/1.67A
OUTPUT: 10W/7.5W/5W
MATERIAL: ABS

CE Qi RoHS



WC-097

WIRELESS CHARGING PAD

INPUT: 5V/2A, 9V/1.67A
OUTPUT: 10W/7.5W/5W
MATERIAL: ALUMINIUM ALLOY+ABS

CE RoHS



WC-126

ULTRA THIN WIRELESS CHARGING PAD

INPUT: 5V/2A, 9V/1.67A
OUTPUT: 10W/7.5W/5W
MATERIAL: ALUMINUMALLOY+ABS

CE RoHS



Earphone



TWS BT EARPHONE

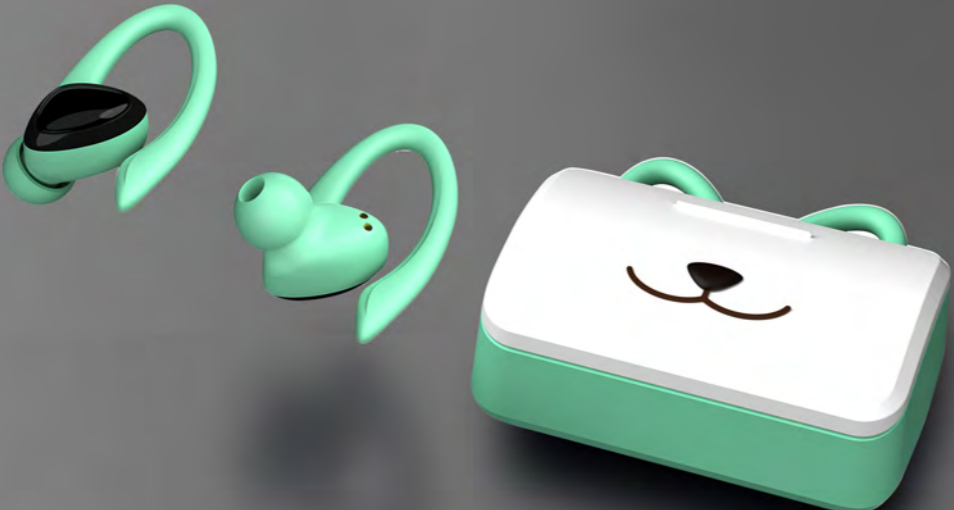


EP-TWS-097

TWS BT EARPHONE
 BLUETOOTH VERSION: V5.0
 PLAYING TIME: 3-4 HOURS
 CHARGING TIME: 1 HOUR
 EAR BATTERY CAPACITY: 35 MAH
 CHARGING CASE CAPACITY: 300 MAH

EP-TWS-149

TWS BT EARPHONE
 BLUETOOTH VERSION: V5.0
 PLAYING TIME: 3-4 HOURS
 CHARGING TIME: 1 HOUR
 EAR BATTERY CAPACITY: 35 MAH
 CHARGING CASE CAPACITY: 300 MAH



EP-ANC-154

TWS BT EARPHONE WITH ANC
 BLUETOOTH VERSION: V5.3
 PLAYING TIME: 4-5 HOURS
 CHARGING TIME: 1 HOUR
 EAR BATTERY CAPACITY: 30 MAH
 CHARGING CASE CAPACITY: 200 MAH

EP-ANC-125

TWS BT EARPHONE WITH ANC
 BLUETOOTH VERSION: V5.0
 PLAYING TIME: 3-4 HOURS
 CHARGING TIME: 1 HOUR
 EAR BATTERY CAPACITY: 30 MAH
 CHARGING CASE CAPACITY: 300 MAH





EP-TWS-155

TWS BT EARPHONE

BLUETOOTH VERSION: V5.3
 PLAYING TIME: 4-5 HOURS
 CHARGING TIME: 1 HOUR
 EAR BATTERY CAPACITY: 30 MAH
 CHARGING CASE CAPACITY: 200 MAH



EP-TWS-150

TWS BT EARPHONE

BLUETOOTH VERSION: V5.0
 PLAYING TIME: 3-4 HOURS
 CHARGING TIME: 1 HOUR
 EAR BATTERY CAPACITY: 30 MAH
 CHARGING CASE CAPACITY: 300 MAH



EP-TWS-151

TWS BT EARPHONE

BLUETOOTH VERSION: V5.0
 PLAYING TIME: 3-4 HOURS
 CHARGING TIME: 1 HOUR
 EAR BATTERY CAPACITY: 30 MAH
 CHARGING CASE CAPACITY: 300 MAH



EP-TWS-152

TWS BT EARPHONE

BLUETOOTH VERSION: V5.0
 PLAYING TIME: 3-4 HOURS
 CHARGING TIME: 1 HOUR
 EAR BATTERY CAPACITY: 30 MAH
 CHARGING CASE CAPACITY: 300 MAH

ANC HEADPHONE

40dB Active Noise Cancellation
 40mm Driver Unit
 40ms Ultra low delay game mode
 Comfortable to wear



EP-ANC-160

BT HEADPHONE WITH ANC

BLUETOOTH VERSION: V5.3
 PLAYING TIME: 25 HOURS
 CHARGING TIME: 1.5-2 HOURS
 BATTERY CAPACITY: 300 MAH
 ANC: 40DB±2





EP-ANC-100

BT HEADPHONE WITH ANC

BLUETOOTH VERSION:	V5.3
PLAYING TIME:	21 HOURS
CHARGING TIME:	1.5-2 HOURS
BATTERY CAPACITY:	300 MAH
ANC:	21DB±2



EP-ANC-153

BT HEADPHONE WITH ANC

BLUETOOTH VERSION:	V5.3
PLAYING TIME:	21 HOURS
CHARGING TIME:	1.5-2 HOURS
BATTERY CAPACITY:	300 MAH
ANC:	21DB±2



EP-ANC-161

BT HEADPHONE WITH ANC

BLUETOOTH VERSION:	V5.3
PLAYING TIME:	21 HOURS
CHARGING TIME:	1.5-2 HOURS
BATTERY CAPACITY:	300 MAH
ANC:	21DB±2



EP-ANC-155

BT HEADPHONE WITH ANC

BLUETOOTH VERSION:	V5.3
PLAYING TIME:	21 HOURS
CHARGING TIME:	1.5-2 HOURS
BATTERY CAPACITY:	300 MAH
ANC:	21DB±2

True bone conduction does not leak sound
sound insulation and noise reduction



EP-BT-156

OPEN EAR WIRELESS EARPHONE

BLUETOOTH VERSION:	V5.3
PLAYING TIME:	6 HOURS
CHARGING TIME:	2 HOURS
BATTERY CAPACITY:	200MAH
WATERPROOF:	IPX8



EP-BT-157

OPEN EAR WIRELESS EARPHONE

BLUETOOTH VERSION:	V5.3
PLAYING TIME:	5 HOURS
CHARGING TIME:	2 HOURS
BATTERY CAPACITY:	110MAH



EP-BT-158

OPEN EAR WIRELESS EARPHONE

BLUETOOTH VERSION:	V5.3
PLAYING TIME:	5 HOURS
CHARGING TIME:	2 HOURS
BATTERY CAPACITY:	110MAH





Data Cable

05

USB4 CABLE



DC-316

TYPE C-C PD FAST CHARGING USB DATA CABLE, METAL SHELL, NYLON BRAIDED

8K60Hz HD for screen

40Gbps high-speed transmission

240W High power charging

Built-in E-Marker Chip

OPTIONAL DATA TRANSMISSION SPEED: 40GBPS / 20GBPS / 10GBPS
OPTIONAL CHARGING POWER: 240W / 100W

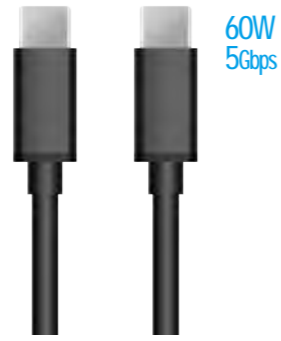




100W
10Gbps

DC-312

TYPE C-C USB DATA CABLE,
METAL SHELL



60W
5Gbps

DC-313

TYPE C-C USB DATA CABLE,
MOLDING SHELL



5Gbps
3A

DC-315

TYPE C USB DATA CABLE
METAL SHELL,NYLON BRAIDED



DC-227

ECO-FRIENDLY PD FAST CHARGING USB
DATA CABLE, WHEAT STRAW FIBRE
A: TYPE C-8PIN C:TYPE C-TYPE C



DC-238

SILICONE USB DATA CABLE,
MOLDING SHELL
A: 8PIN B: MICRO C: TYPE C



DC-243

SILICONE PD FAST CHARGING USB
DATA CABLE, MOLDING SHELL
A: TYPE C-8PIN C: TYPE C-TYPE C



240W
480Mbps

DC-311

240W TYPE C-C PD FAST CHARGING USB DATA
CABLE, METAL SHELL, NYLON BRAIDED



100W
480Mbps

DC-263

100W TYPE C-C PD FAST CHARGING USB DATA
CABLE, METAL SHELL, NYLON BRAIDED



60W
480Mbps

DC-171

PD FAST CHARGING USB DATA CABLE,
MOLDING SHELL
A: 8PIN C: TYPE C



DC-302

USB DATA CABLE, METAL SHELL,
FABRIC BRAIDED
A: 8PIN B: MICRO C: TYPE C



DC-301

USB DATA CABLE, METAL SHELL
A: 8PIN B: MICRO C: TYPE C



DC-083

CYLINDRICAL USB DATA CABLE,
METAL SHELL, FABRIC BRAIDED
A: 8PIN B: MICRO C: TYPE C



60W
480Mbps

DC-298

PD FAST CHARGING USB DATA CABLE,
MOLDING SHELL, TPE JACKET, LONG SR TAIL
A: TYPE C-8PIN C: TYPE C-TYPE C



DC-297

USB DATA CABLE, MOLDING SHELL,
TPE JACKET, LONG SR TAIL
A: 8PIN B: MICRO C: TYPE C



DC-225

ECO-FRIENDLY USB DATA CABLE,
WHEAT STRAW FIBRE
A: 8PIN B: MICRO C: TYPE C



DC-276

PD FAST CHARGING FLAT USB DATA CABLE,
MOLDING SHELL
A: TYPE C-8PIN C: TYPE C-TYPE C



DC-064

FLAT USB DATA CABLE, METAL SHELL,
FABRIC BRAIDED
A: 8PIN B: MICRO C: TYPE C



DC-180

CYLINDRICAL MAGNETIC USB DATA CABLE,
METAL SHELL, NYLON BRAIDED
A: 8PIN B: MICRO C: TYPE C



DC-001

USB DATA CABLE, METAL SHELL,
NYLON BRAIDED
A: 8PIN B: MICRO C: TYPE C



DC-006

USB DATA CABLE, METAL SHELL,
FABRIC BRAIDED
A: 8PIN B: MICRO C: TYPE C



DC-303

CYLINDRICAL USB DATA CABLE,
METAL SHELL, FABRIC BRAIDED
A: 8PIN B: MICRO C: TYPE C



DC-346

PD FAST CHARGING USB DATA CABLE,
METAL SHELL, FABRIC BRAIDED
A: TYPE C-8PIN C: TYPE C-TYPE C



DC-344

L TYPE RIGHT ANGLE PD FAST CHARGING
USB DATA CABLE, METAL SHELL, FABRIC BRAIDED
A: TYPE C-8PIN C: TYPE C-TYPE C



DC-345

L TYPE RIGHT ANGLE PD FAST CHARGING
USB DATA CABLE, METAL SHELL, FABRIC BRAIDED
A: TYPE C-8PIN C: TYPE C-TYPE C



DC-309

4 IN 1 USB DATA CABLE, METAL SHELL,
NYLON BRAIDED



DC-220

3 IN 1 USB DATA CABLE, METAL SHELL,
NYLON BRAIDED



DC-321

5 IN 1 USB DATA CABLE, METAL SHELL,
NYLON BRAIDED



Hub & Adapter





AD-135A

4 IN 1 USB HUB
METAL SHELL USB TO USB3.0*4



AD-128

2 IN 1 TYPE C MST HUB
METAL SHELL TYPE C TO HDMI*2



AD-135B

4 IN 1 USB HUB
METAL SHELL USB+TYPE C TO USB3.0*4



AD-129

4 IN 1 TYPE C MST HUB
METAL SHELL TYPE C TO HDMI*2+PD+USB



AD-135C

4 IN 1 TYPE C HUB
METAL SHELL TYPE C TO USB3.0*4



AD-130

5 IN 1 TYPE C MST HUB
METAL SHELL TYPE C TO HDMI+VGA+DP+PD+USB



AD-089

3 IN 1 TYPE C HUB
METAL SHELL TYPE C TO HDMI+PD+USB



AD-116

3 IN 1 TYPE C HUB
METAL SHELLTYPE C TO HDMI+PD+USB



AD-090

5 IN 1 TYPE C HUB
METAL SHELL 2*TYPE C TO HDMI*2+PD+USB*2



AD-117

5 IN 1 TYPE C HUB
METAL SHELL TYPE C TO HDMI+PD+TYPE C+USB*2



AD-091

7 IN 1 TYPE C HUB
METAL SHELL 2*TYPE C TO HDMI+PD+TYPE C+SD+TF+USB*2



AD-053

7 IN 1 TYPE C HUB
METAL SHELL TYPE C TO HDMI+PD+TYPE C+SD+TF+USB*2





AD-037

3 IN 1 TYPE C HUB
METAL SHELL TYPE C TO HDMI+PD+USB



AD-133

8 IN 1 TYPE C HUB
METAL SHELL TYPE C TO HDMI+USB*3+PD+TF+SD+RJ45



AD-126

2 IN 1 TYPE C HUB
METAL SHELL TYPE C TO MINI DP+DP



AD-095

9 IN 1 TYPE C HUB
METAL SHELL TYPE C TO HDMI+RJ45+VGA+PD+SD+TF+USB*2
+AUDIO+WIRELESS CHARGING(5W)



AD-127

2 IN 1 TYPE C MST HUB
ABS SHELL USB+TYPE C TO HDMI*2



AD-050

11 IN 1 TYPE C HUB
METAL SHELL TYPE C TO HDMI+RJ45+VGA+PD+TYPE C+SD
+TF+USB*3+AUDIO



AD-099

TYPE C TO HDMI ADAPTER, METAL SHELL

AD-100

TYPE C TO DP ADAPTER, METAL SHELL

AD-101

TYPE C TO MINI DP ADAPTER, METAL SHELL

AD-102

TYPE C TO VGA ADAPTER, METAL SHELL

AD-103

TYPE C TO RJ45 ADAPTER, METAL SHELL



AD-106

TYPE C TO HDMI ADAPTER, METAL SHELL

AD-107

TYPE C TO DP ADAPTER, METAL SHELL

AD-108

TYPE C TO MINI DP ADAPTER, METAL SHELL

AD-109

TYPE C TO RJ45 ADAPTER, METAL SHELL



AD-121

TYPE C TO HDMI+PD 100W ADAPTER, METAL SHELL

AD-122

TYPE C TO DP+PD 100W ADAPTER, METAL SHELL

AD-123

TYPE C TO MINI DP+PD 100W ADAPTER, METAL SHELL

AD-124

TYPE C TO VGA+PD 100W ADAPTER, METAL SHELL

AD-125

TYPE C TO RJ45+PD 65W ADAPTER, METAL SHELL



MHL-20

TYPE C TO HDMI, 8K, METAL SHELL



MHL-016

TYPE C TO HDMI, ABS SHELL



MHL-017

TYPE C TO HDMI, METAL SHELL



MHL-018

TYPE C TO HDMI+PD, METAL SHELL



MHL-019

TYPE C TO HDMI, WITH USB, METAL SHELL



AD-134

TYPE C TO HDMI FEMALE, METAL SHELL



Power Bank





PB-045-5MS

5000MAH SOLAR WIRELESS POWER BANK WITH LED TORCH

INPUT-MICRO: 5V/2A
 INPUT-C: 5V/2A
 OUTPUT-A: 5V/2.1A
 OUTPUT WIRELESS: 5W(MAGNETIC)
 SOLAR POWER: 5V/0.5W
 SIZE: 108*68*20MM
 MATERIAL: ABS



PB-058-10QM

10000MAH MAGNETIC WIRELESS POWER BANK WITH DIGITAL DISPLAY

INPUT-MICRO: 5V/3A, 9V/2A, 12V/1.5A
 INPUT-C: 5V/3A, 9V/2A, 12V/1.5A
 OUTPUT-C: 5V/3A, 9V/2.22A, 12V/1.67A with PD (20W MAX)
 OUTPUT-A1+A2: 5V/4.5A, 4.5V/5A, 9V/2A, 12V/1.5A (22.5W MAX)
 OUTPUT WIRELESS: 15W
 SIZE: 147.7*69*17MM
 MATERIAL: ABS



PB-059-20QM

20000MAH MAGNETIC WIRELESS POWER BANK WITH DIGITAL DISPLAY

INPUT-MICRO: 5V/3A, 9V/2A, 12V/1.5A
 INPUT-C: 5V/3A, 9V/2A, 12V/1.5A
 OUTPUT-C: 5V/3A, 9V/2.22A, 12V/1.67A with PD (20W MAX)
 OUTPUT-A1+A2: 5V/4.5A, 4.5V/5A, 9V/2A, 12V/1.5A (22.5W MAX)
 OUTPUT WIRELESS: 15W
 SIZE: 147.7*69*30MM
 MATERIAL: ABS



PB-046-8S

8000MAH SOLAR POWER BANK

INPUT-MICRO: 5V/2A
 OUTPUT-A1+A2: 5V/2.1A
 SOLAR POWER: 5V/0.6W
 SIZE: 140*75*17MM
 MATERIAL: ABS



PB-047-20S

20000MAH SOLAR POWER BANK

INPUT-MICRO: 5V/2A
 INPUT-C: 5V/2A
 OUTPUT-A1+A2: 5V/2.1A
 SOLAR POWER: 5V/2W
 SIZE: 168*86*25MM
 MATERIAL: ABS



PB-048-10SL

10000MAH SOLAR POWER BANK WITH LED TORCH

INPUT-C: 5V/2A
 OUTPUT-A1+A2: 5V/2A
 SOLAR POWER: 5V/1W
 SIZE: 145*75*20MM
 MATERIAL: ABS



PB-050-10QMZ

10000MAH WIRELESS MOBILE PHONE STAND POWER BANK

INPUT-MICRO: 5V/3A, 9V/2A, 12V/1.5A
 INPUT-C: 5V/3A, 9V/2A, 12V/1.5A
 OUTPUT-C: 5V/3A, 9V/2.22A, 12V/1.67A with PD (20W MAX)
 OUTPUT-A1+A2: 5V/4.5A, 4.5V/5A, 9V/2A, 12V/1.5A (22.5W MAX)
 OUTPUT WIRELESS: 15W
 SIZE: 145*69*20MM
 MATERIAL: ABS



PB-051-5QMZ

5000MAH WIRELESS MOBILE PHONE STAND POWER BANK

INPUT-C: 5V/3A, 9V/2A, 12V/1.5A
 OUTPUT-C: 5V/3A, 9V/2A, 12V/1.5A
 INPUT-8PIN: 5V/3A, 9V/2A, 12V/1.5A
 OUTPUT WIRELESS: 15W
 SIZE: 105*67*15MM
 MATERIAL: ABS+PU



PB-026-5

5000MAH POWER BANK

INPUT: 5.0V/2.0A(MICRO&TYPE-C)
OUTPUT: 5.0V/2.0A(USB-A&TYPE-C)
POWER: 18.5WH
SIZE: 99.5*63.5*13.5MM
MATERIAL: ABS



PB-027-10

10000MAH POWER BANK

INPUT: 5.0V/2.0A(MICRO&TYPE-C)
OUTPUT: 5.0V/2.0A(USB-A&TYPE-C)
POWER: 37WH
SIZE: 137*68.5*15.5MM
MATERIAL: ABS

PB-027-10Q

10000MAH FAST CHARGING POWER BANK

INPUT 1: 5V/2A(MICRO)
INPUT 2: 5V/2A, 9V/2A(TYPE-C)
OUTPUT 1: 5V/2A, 9V/2A, 12V/1.5A(TYPE-C)
OUTPUT 2: 5V-6.5V/3A, 6.5V-9V/2A, 9V-12V/1.5A(USB-A)
POWER: 37WH
SIZE: 137*68.5*15MM
MATERIAL: ABS



PB-028-20

20000MAH POWER BANK

INPUT: 5.0V/2.0A(MICRO&TYPE-C)
OUTPUT: 5.0V/2.0A(USB-A&TYPE-C)
POWER: 74WH
SIZE: 137*68.5*27.5MM
MATERIAL: ABS

PB-043-20Q

20000MAH FAST CHARGING POWER BANK

INPUT 1: 5V/2A(MICRO)
INPUT 2: 5V/2A, 9V/2A(TYPE-C)
OUTPUT 1: 5V/2A, 9V/2A, 12V/1.5A(TYPE-C)
OUTPUT 2: 5V-6.5V/3A, 6.5V-9V/2A, 9V-12V/1.5A(USB-A)
POWER: 74WH
SIZE: 137*68.5*27.5MM
MATERIAL: ABS



PB-029-30

30000MAH POWER BANK

INPUT: 5.0V/2.0A(MICRO&TYPE-C)
OUTPUT: 5.0V/2.0A(USB-A&TYPE-C)
POWER: 111WH
SIZE: 166*79.5*30MM
MATERIAL: ABS

PB-044-30Q

30000MAH FAST CHARGING POWER BANK

INPUT 1: 5V/2A(MICRO)
INPUT 2: 5V/2A, 9V/2A(TYPE-C)
OUTPUT 1: 5V/2A, 9V/2A, 12V/1.5A(TYPE-C)
OUTPUT 2: 5V-6.5V/3A, 6.5V-9V/2A, 9V-12V/1.5A(USB-A)
POWER: 111WH
SIZE: 166*79.5*30MM
MATERIAL: ABS



PB-052-10QC

10000MAH POWER BANK WITH CABLE

OUTPUT-A: 5V/2A, 5V/3A, 5V/4.5A(SCP), 9V/2A, 12V/1.5A
INPUT-C: 5V/2A, 5V/3A, 9V/2A, 12V/1.5A
OUTPUT-C: 5V/2A, 5V/3A, 9V/2A, 12V/1.5A
OUTPUT-C CABLE: 5V/2A, 5V/3A, 5V/4.5A(SCP), 9V/2A, 12V/1.5A
INPUT-8PIN: 5V/2A, 9V/2A, 12V/1.5A
OUTPUT-8PIN CABLE: 5V/2.4A
SIZE: 147*69*15.6MM
MATERIAL: ABS



PB-053-20QC

20000MAH POWER BANK WITH CABLE

OUTPUT-A: 5V/2A, 5V/3A, 5V/4.5A(SCP), 9V/2A, 12V/1.5A
INPUT-C: 5V/2A, 5V/3A, 9V/2A, 12V/1.5A
OUTPUT-C: 5V/2A, 5V/3A, 9V/2A, 12V/1.5A
OUTPUT-C CABLE: 5V/2A, 5V/3A, 5V/4.5A(SCP), 9V/2A, 12V/1.5A
INPUT-8PIN: 5V/2A, 9V/2A, 12V/1.5A
OUTPUT-8PIN CABLE: 5V/2.4A
SIZE: 147*69*28MM
MATERIAL: ABS



PB-054-30QC

30000MAH POWER BANK WITH CABLE

OUTPUT-A: 5V/2A, 5V/3A, 5V/4.5A(SCP), 9V/2A, 12V/1.5A
INPUT-C: 5V/2A, 5V/3A, 9V/2A, 12V/1.5A
OUTPUT-C: 5V/2A, 5V/3A, 9V/2A, 12V/1.5A
OUTPUT-C CABLE: 5V/2A, 5V/3A, 5V/4.5A(SCP), 9V/2A, 12V/1.5A
INPUT-8PIN: 5V/2A, 9V/2A, 12V/1.5A
OUTPUT-8PIN CABLE: 5V/2.4A
SIZE: 147*69*40.5MM
MATERIAL: ABS



PB-055-C5

4500MAH CAPSULE POWER BANK

INPUT-C: 5V/2A
OUTPUT-C: 5V/2.1A
SIZE: 80.5*25.9*47.2MM
MATERIAL: ABS



PB-056-10W

10000MAH WIRELESS POWER BANK

INPUT-C: 5V/3A, 9V/2A, 12V/1.5A
OUTPUT-C: 5V/3A, 9V/2.22A, 12V/1.67A with PD (20W MAX)
OUTPUT-A: 5V/4.5A, 4.5V/5A, 9V/2A, 12V/1.5A (22.5W MAX)
OUTPUT WIRELESS: 15W (Phone 3W-5W)
SIZE: 107.5*63*25MM
MATERIAL: ABS



PB-057-10Z

10000MAH MOBILE PHONE STAND POWER BANK

INPUT-MICRO: 5V/2A
INPUT-C: 5V/2A
OUTPUT-A1+A2: 5V/2A
SIZE: 134*64*37MM
MATERIAL: ABS



Packaging



HOT SEALING BLISTER
SIZE: 80*150MM



HOT SEALING BLISTER
SIZE: 80*150MM



OPP BAG
SIZE: 100*150MM



COLOR BOX W/PAPER TRAY
SIZE: 80*130*25MM



COLOR BOX W/PAPER TRAY
SIZE: 80*130*35MM



COLOR BOX W/PAPER TRAY
SIZE: 80*130*30MM



PAPER CARD
SIZE:160*100MM



PAPER WRAP
SIZE:35*23.5*41MM



PAPER WRAP WITH EURO HOLE
SIZE:38*30*62MM



PAPER WRAP WITH EURO HOLE
SIZE:85*45*115MM



**ECO-FRIENDLY COLOR BOX
W/PAPER TRAY**
SIZE: 60*160*20MM



**ECO-FRIENDLY COLOR BOX
W/PAPER TRAY**
SIZE: 95*135*20MM



**ECO-FRIENDLY COLOR BOX
W/PAPER TRAY**
SIZE: 90*140*20MM



**ECO-FRIENDLY COLOR BOX
W/PAPER TRAY**
SIZE: 70*90*70MM



**ECO-FRIENDLY PAPER BAG
W/PAPER TRAY**
SIZE: 55*120MM



ECO-FRIENDLY PDQ DISPLAY



ECO-FRIENDLY FLOOR DISPLAY



ECO-FRIENDLY FLOOR DISPLAY